

**District Court of Western Australia**

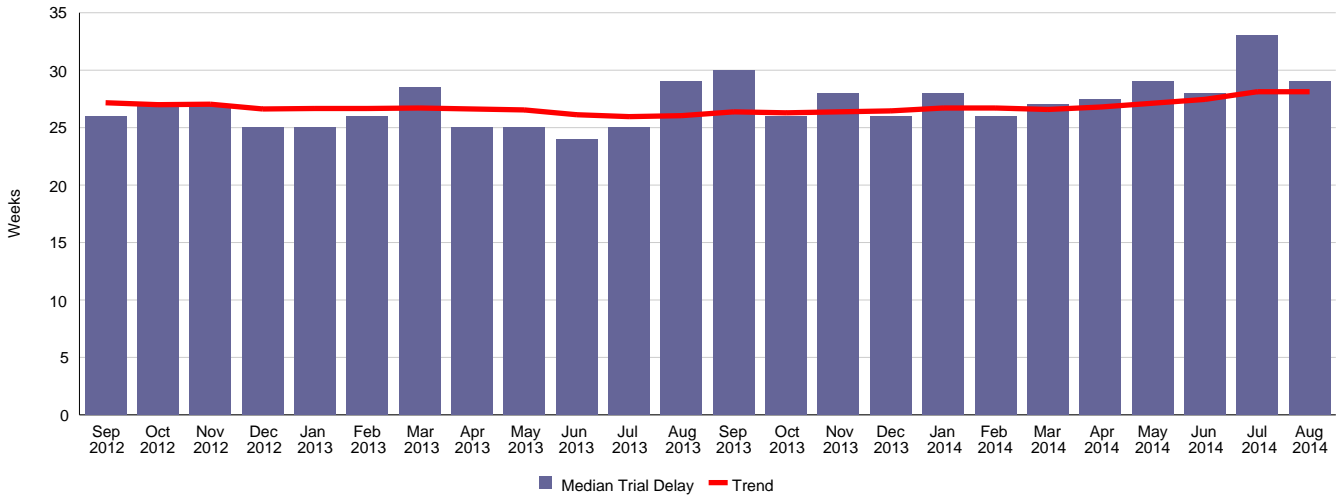
**Performance and Caseload Statistics**

**August 2014**

# Criminal Division

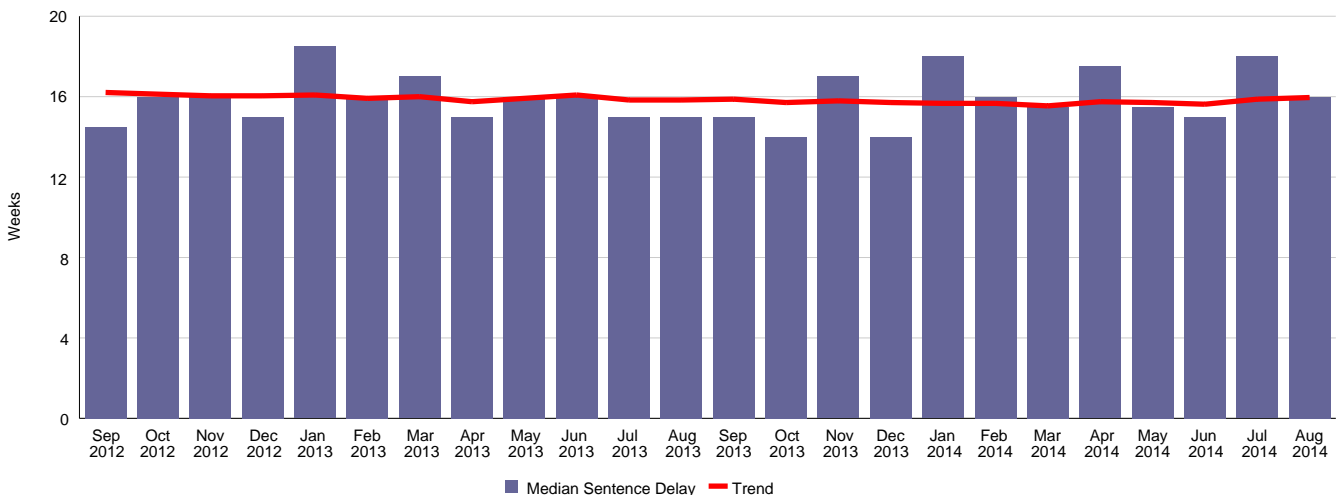
## 1. Median Trial Delay

This indicator measures median delay to trial (in weeks) from the date a case is committed to the District Court. It is the best indicator of how long it is likely to obtain a trial in the District Court.



## 2. Median Sentencing Delay

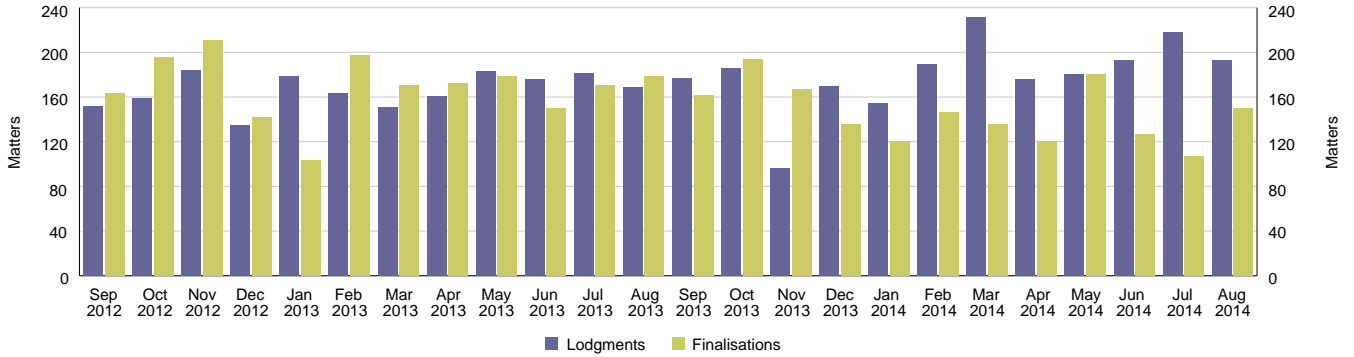
In addition to cases committed for trial, some matters are committed to the District Court for sentencing only. This measure reflects the time it is likely to take to finalise these cases from the date of the last appearance in the Magistrates Court.



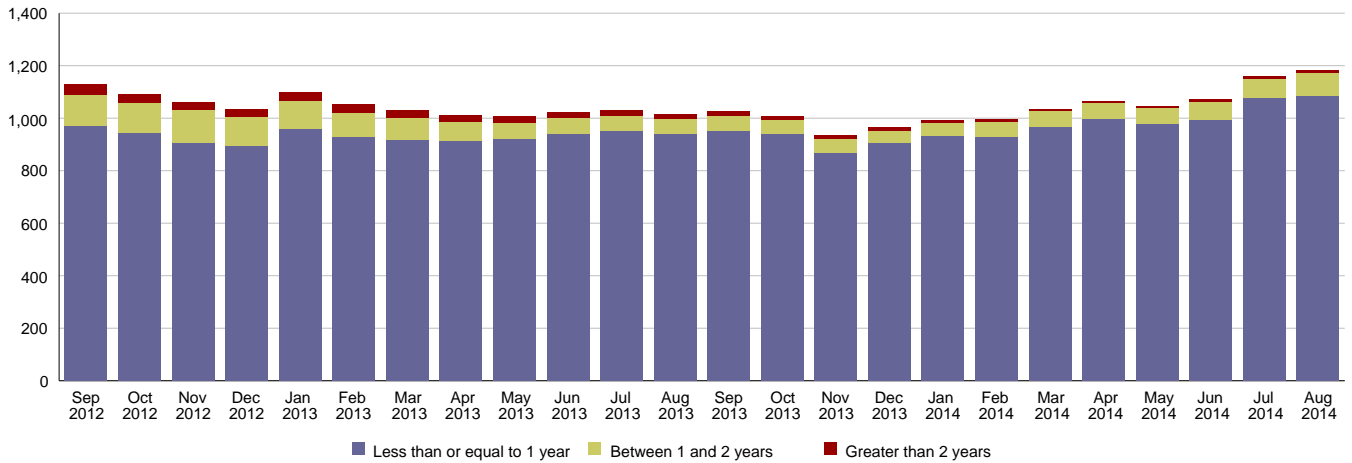
# Criminal Division

## 3. Caseload

### Accused Lodgments and Finalisations

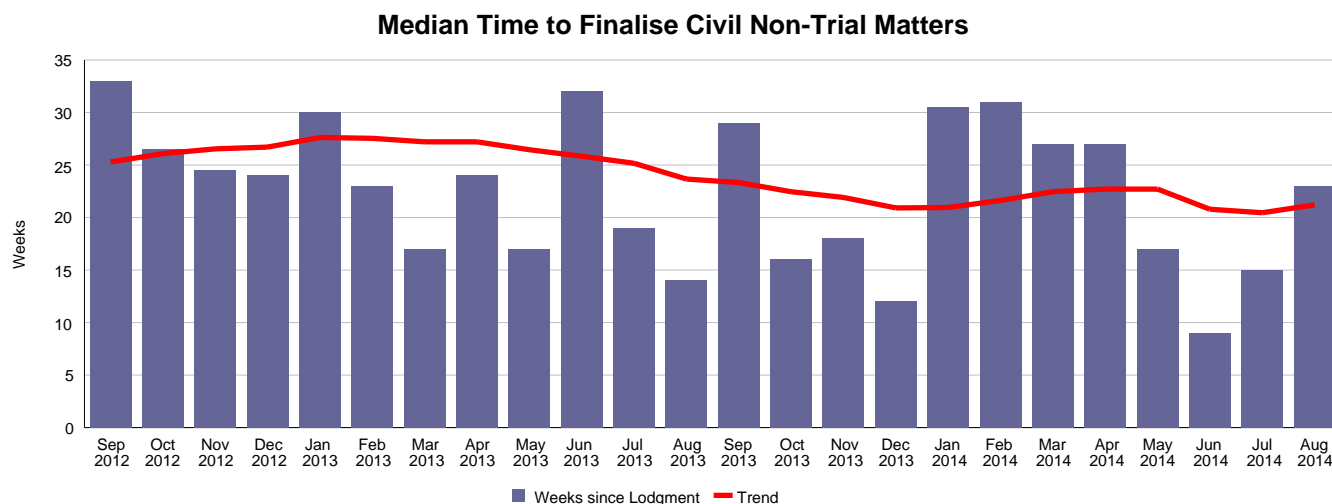


### Accused Cases on Hand

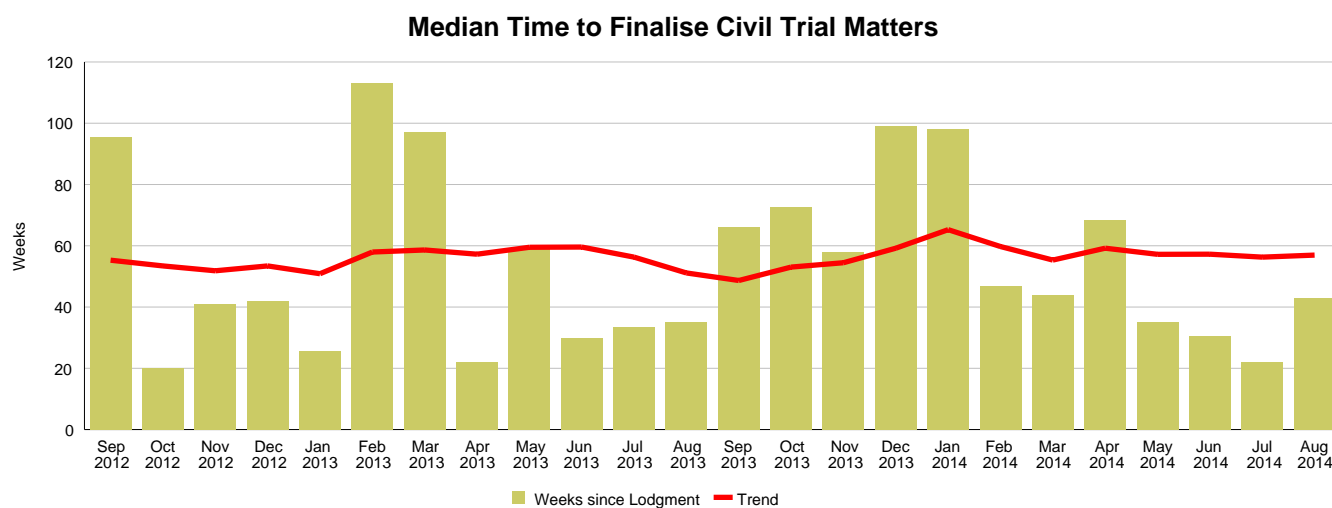


## 1. Median Finalisation Delay

This indicator measures the median time from commencement of an action to completion in which no trial was held. The majority of civil cases are finalised because the parties agree to settle the dispute without the need for a trial. Many of these settlements are reached within the Court's pre-trial conference system.



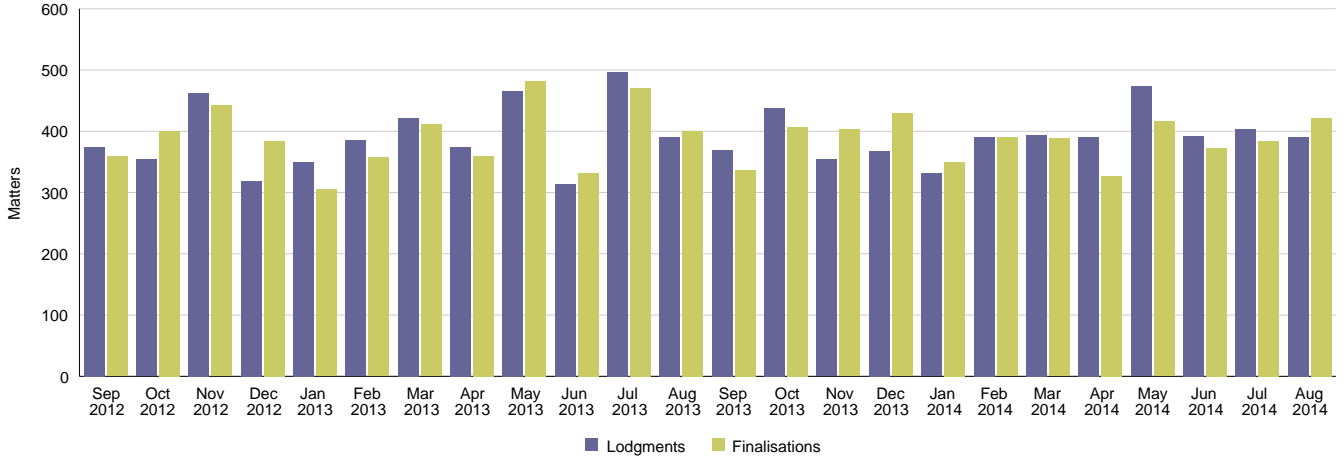
This indicator sets out the likely time it will take to finalise a civil case by trial in the District Court. Around 1% of civil cases are determined after trial.



# Civil Division

## 2. Caseload

### Civil Lodgments and Finalisations



### Civil Cases on Hand

